

# The GEOSOURCE UPDATE

*from your Trusted Site Solution Specialists*

Geosynthetics | Erosion & Sediment Control | Stormwater Management | Hardscapes

## PROJECT HIGHLIGHT

### ARMORMAX Installation For Slope Stability

ASP Enterprises Supplied ARMORMAX by Propex GeoSolutions

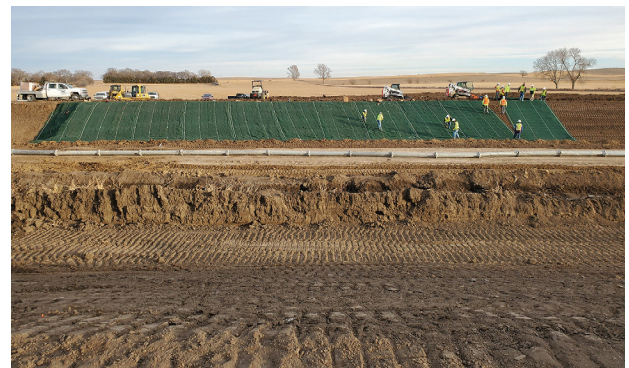


This project required a solution to prevent erosion, provide flood protection and stabilize the slopes along the channel.

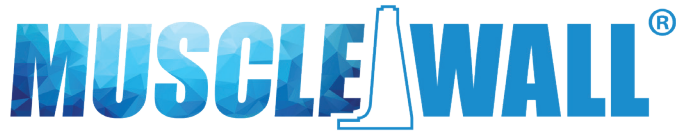
In 2019, catastrophic flooding all along the Missouri River Basin was a direct result of a “bomb cyclone” weather event in March. This, coupled with significant snowmelt coming down from the north, sent unimaginable volumes of water down the Missouri River. In Randolph, NE, the town was overrun by backwater from the river flooding into their stormwater ditch which caused significant issues for the city. Sandbagging and eventual evacuations were the result.

Once the water receded, the US Army Corps of Engineers prepared plans to expand drainage areas for extended storage in the city to reduce the risk of future flooding. The Army Corps has done extensive work on levee repair methods out of other offices in the country and utilized that knowledge to specify a high-performance, high tensile strength, turf reinforcement mat system with anchoring for extended surficial slope support and long term erosion control.

The product recently installed at this project was ARMORMAX Engineered Earth Armoring System™. This system combines High-Performance Turf Reinforcement Mats (HPTRMs) and Engineered Earth Anchors™ (EEA) that work together to lock soil in place and protect against hydraulic stresses.



# PRODUCT PROFILE



FLOOD • CONTAINMENT • STORMWATER

## Muscle Wall - Portable Barrier System

We are pleased to announce that we are now Muscle Wall distributors and introduce this site solution!

Muscle Wall is a portable, strong plastic barrier that, once placed in the correct position, is filled with water for ballast. It is primarily used to contain or divert water; however, it has many other applications and can be used as an effective alternative to silt fencing, sandbags, concrete and earthen solutions.

Muscle Wall is designed to withstand the immense force of rushing or standing water. It utilizes a toe on the water side of the wall that uses the weight of the encroaching water, coupled with the weight of the water-filled wall to anchor the system to the ground. A liner can be deployed over the wall to help provide the most effective seal. Because of this, it can be used in flood control, stormwater management, primary or secondary containment, erosion control and more.

This system is quick and easy to install, reusable, optimized for storage, and customizable to fit a variety of project needs.

## Muscle Wall Webinar

We recently had Tyler Searle, Technical Sales Engineer at Muscle Wall, join us for our Technical Talks Webinar Series.

The webinar discussed specifics of recent deployments with Bowman Construction Supply as well as other applications, 3rd party testing, and the engineering and logistics behind Muscle Wall solutions.

[WATCH RECORDING HERE](#)

To learn more about Muscle Wall, visit our [website](#) or [contact us](#).

We're happy to answer any questions and provide technical information or assistance with your projects.



Flood Control



Stormwater Management



Primary & Secondary Containment



Streambank Diversion



Erosion Control

## TECHNICAL TALKS WEBINAR SERIES

Stay tuned for more webinars coming up in our 2021 webinar series! Our free webinars are for answering questions, sharing technical information and collaborating on projects, plus attendees receive a PDH Certificate for attending. Bill Murphy, P.E. is joined by sales professionals and industry leaders to educate attendees on some of the site solutions ASP, Quick, Bowman and Cascade can provide.



Watch our past webinars [here](#).

### *Upcoming Webinar*

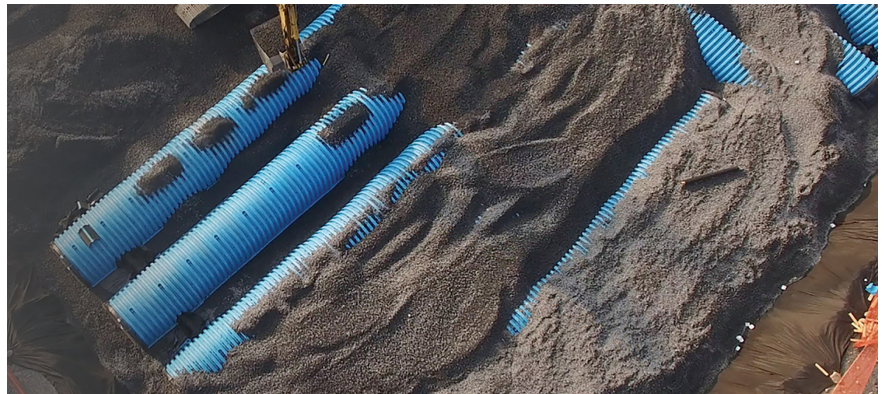
#### **Cultec Webinar**

June 9th, 2021 | 12:30pm-1:30pm CST

**REGISTER HERE**

Join us for this webinar to learn more about Cultec's stormwater chamber systems.

Cultec revolutionized the stormwater management world with the advent of arched plastic chambers in 1986. Initially used for septic purposes, the civil engineers local to the DiTullio family's Cultec operation began inquiring about use of the product for underground stormwater management. Today, Cultec is acknowledged by its specifiers, installers and end users to offer the most complete and simplistic line of chamber solutions meeting modern stormwater volumetric and quality objectives.



## SCHEDULE A PRESENTATION OR MEETING

Want to discuss a project plan or interested in learning about our site solutions? Contact us!

We are happy to meet with you either in person or virtually. Our on-staff engineer, Bill Murphy, P.E., or one of our technical sales representatives can share a presentation to help you gain a deeper understanding of our products and how they work. We can also discuss project designs or plans and walk through solutions and installation methods to ensure the right materials are used and installed correctly to ensure the project's success.

**CLICK TO SCHEDULE**

# ENGINEER'S NOTE

## Common Sense > Artificial Intelligence

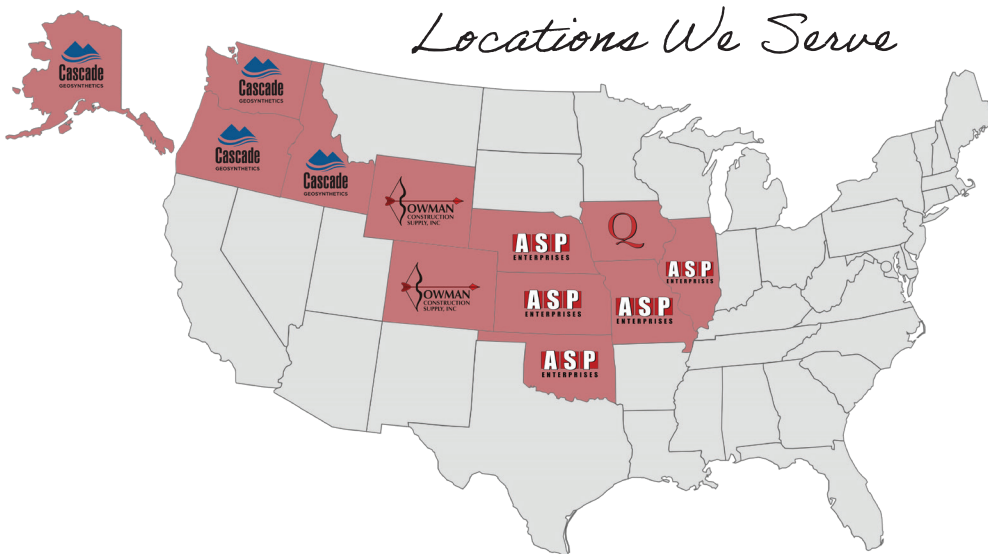
Today I attended a webinar on how to get more out of SharePoint. The presenter is a genius in all things Microsoft. He told us that Artificial Intelligence (AI) is the future and the future is now. He went on to give many examples of how important it is to continue learning how to improve our digital presence as we stay ahead of our competition. Agreed. Our company is dedicated to our theme this year, "Always Improving". The more he spoke, the more I felt appreciation for the human aspect of our business. Experience, relationships, caring, compassion and several other things that make us human are also what make us great at what we do for a living. Here is an example:



**Bill Murphy, P.E.**  
bmurphy@aspent.com

One of our sales reps called me about a huge project opportunity in his market. A city engineer asked him specifically about a solution we have helped them use successfully in the past. But our sales rep said we have a much more affordable option that would work just as well for this next project, particularly since this next phase is in an old industrial area so aesthetics are not a high priority. Our sales rep suggested we offer the more affordable solution so the city can direct more funds towards other critical infrastructure areas. AI would have given a "yes" or a checked box if the engineer simply looked up the previous solution online. No problem. But the common sense our sales rep provided based upon years of construction experience and caring about the city and their resources offers a better alternative. Common sense and AI together will help us all be better stewards of our precious resources. Call us today so we can help you.

## YOUR TRUSTED SITE SOLUTION SPECIALISTS



For more than 45 years ASP Enterprises, Quick Supply Co., Bowman Construction Supply and Cascade Geosynthetics have provided geosynthetic, erosion control, sediment control and stormwater management solutions with integrity and expertise. Our mission is to be your local expert on solutions that improve our communities while providing the highest level of customer service. We are proud to represent numerous manufacturers and will be present from design specification and development to installation to ensure your project's success.

## CONTACT US

### ASP Enterprises

aspent.com  
salesasp@aspent.com

### Quick Supply Co.

quicksupplydm.com  
salesquick@quicksupplydm.com

### Bowman Construction Supply

bowmanconstructionsupply.com  
salesbcs@bowmanconstructionsupply.com

### Cascade Geosynthetics

cascadegeos.com  
salescascade@cascadegeos.com

**St. Louis, MO**    **Omaha, NE**  
636.343.4357    402.861.8579  
**Kansas City, MO**    **Wichita, KS**  
816.554.1191    316.393.1554

**Des Moines, IA**  
515.289.1271

**Denver, CO**    **Colorado Springs, CO**  
303.696.8960    719.257.7840  
**Loveland, CO**  
970.535.0863

**Portland, OR**  
971.339.1020